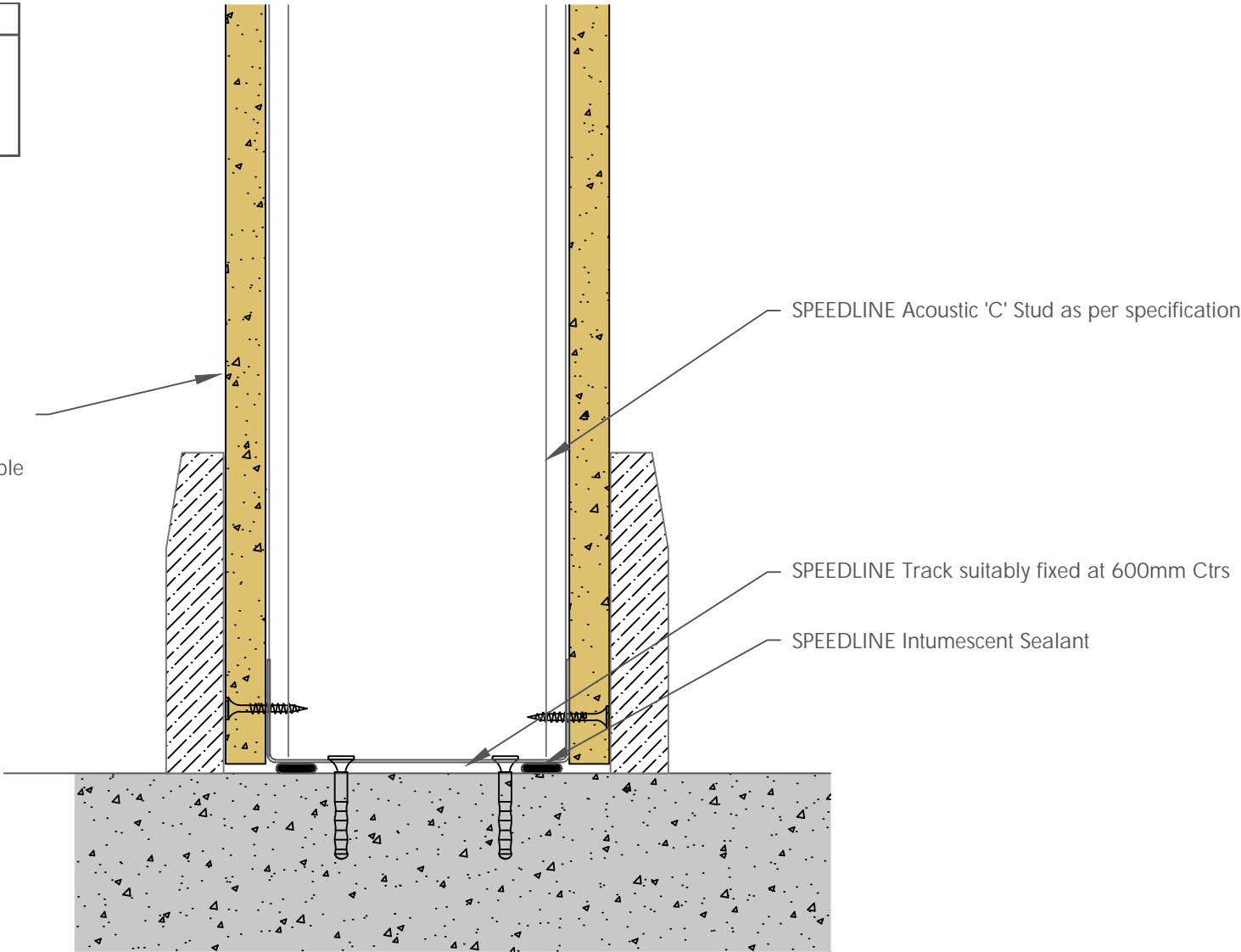


Board Thickness	Speedline Drywall Fixing Length
12.5mm & 15mm	25mm
12.5mm + 12.5mm	25mm + 38mm
12.5mm + 15mm	25mm + 42mm
15mm + 15mm	25mm + 42mm

One layer of Gypsum Plasterboard fixed with SPEEDLINE Drywall Screws at 300mm Ctrs, (200mm at external angles). Refer to above table for fixing lengths



Design Data:
 Detail may not replicate a laboratory tested configuration and for this reason approval from the relevant authority and Principal Designer should be sought.
 Detail based on construction with materials & components as shown. The inclusion or substitution of any other manufacturers materials or components must be given in writing by SIG PLC.
 This information is provided in good faith and is based upon details received which are assumed to include all relevant facts.
 We accept no liability for its accuracy, adequacy or completeness. Recipients must satisfy themselves as to its suitability as we do not accept responsibility for any claims or consequential loss.
 Acceptance of the content and subsequent design responsibility rests entirely with the recipients who should then produce accepted details on their own company documentation.

CDR No: 683	SCALE: NTS	DATE: 01/08/24
ACOUSTIC 'C' STUD BASE DETAIL SINGLE LAYER AS9212IR		
Details to be read in conjunction with project specification guidelines		

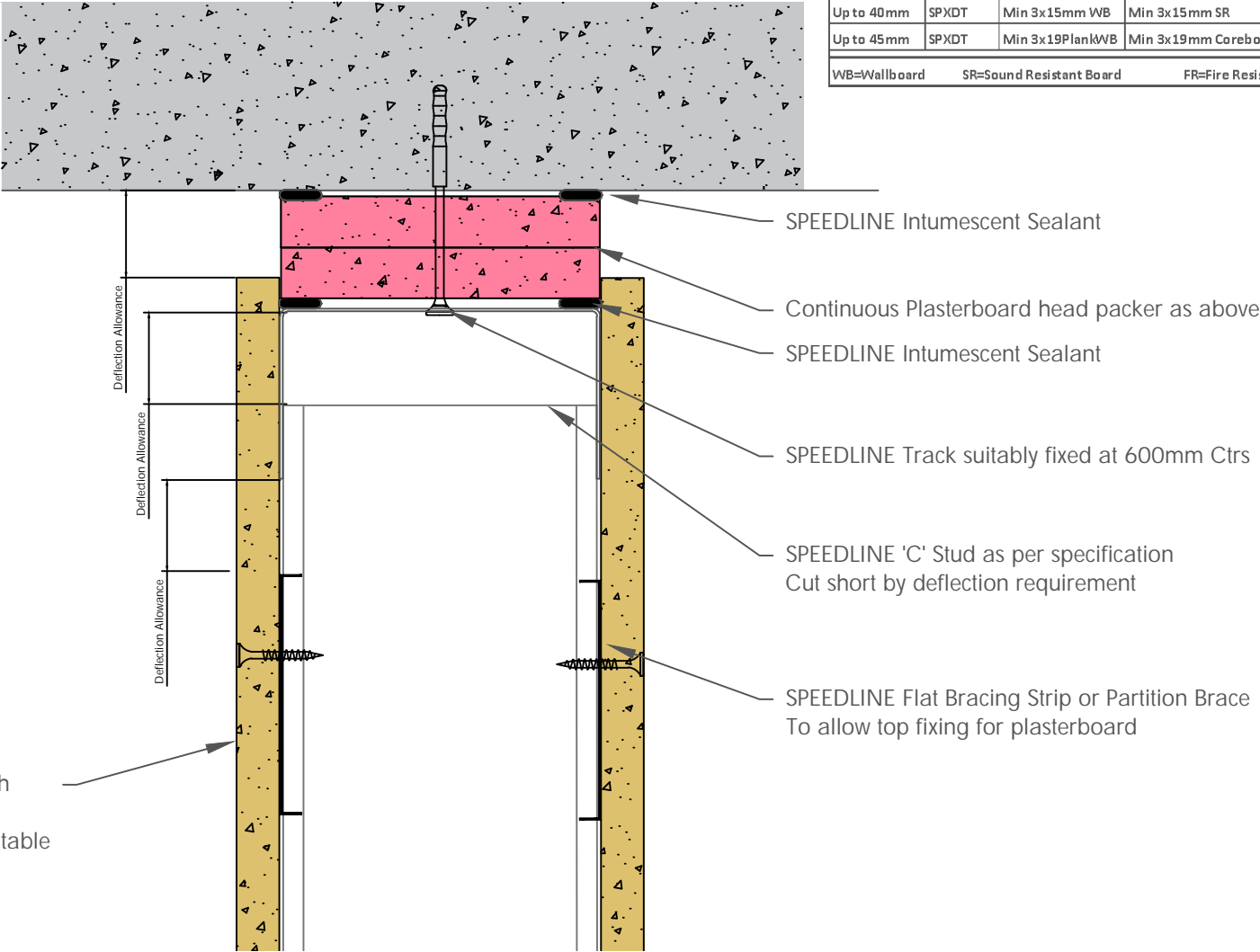
Adsetts House,
 16 Europa View,
 Sheffield Business Park,
 Sheffield,
 S9 1XH.
 T: 0114 231 8030
 E: enquiries@speedlinedrywall.co.uk



Board Thickness	Speedline Drywall Fixing Length
12.5mm & 15mm	25mm
12.5mm + 12.5mm	25mm + 38mm
12.5mm + 15mm	25mm + 42mm
15mm + 15mm	25mm + 42mm

DO NOT SCREW FIX THE PLASTERBOARD TO THE STUD OR TRACK ABOVE PARTITION BRACE.
DO NOT FIX STUDS TO HEAD TRACKS AS THIS WILL STOP DEFLECTION HEAD FROM MOVING

HEAD PACKER THICKNESS PER DEFLECTION ALLOWANCE				
		Head Packers by Fire Rating		
Deflection	Head Track	30 Mins	60Mins	90 & 120Mins
Up to 10mm	SPT	Min 15mm WB	Min 15mm SR	Min 15mm FR
Up to 15mm	SPEDT	Min 2x12.5mm WB	Min 2x12.5mm SR	Min 2x12.5mm FR
Up to 25mm	SPEDT	Min 2x15mm WB	Min 2x15mm SR	Min 2x15mm FR
Up to 30mm	SPEDT	Min 3x12.5mm WB	Min 3x12.5mm SR	Min 3x12.5mm FR
Up to 40mm	SPXDT	Min 3x15mm WB	Min 3x15mm SR	Min 3x15mm FR
Up to 45mm	SPXDT	Min 3x19PlankWB	Min 3x19mm Coreboard	Min 3x19mm Coreboard
WB=Wallboard SR=Sound Resistant Board FR=Fire Resistant Board (Type F)				



One layer of Gypsum Plasterboard fixed with SPEEDLINE Drywall Screws at 300mm Ctrs, (200mm at external angles). Refer to above table for fixing lengths

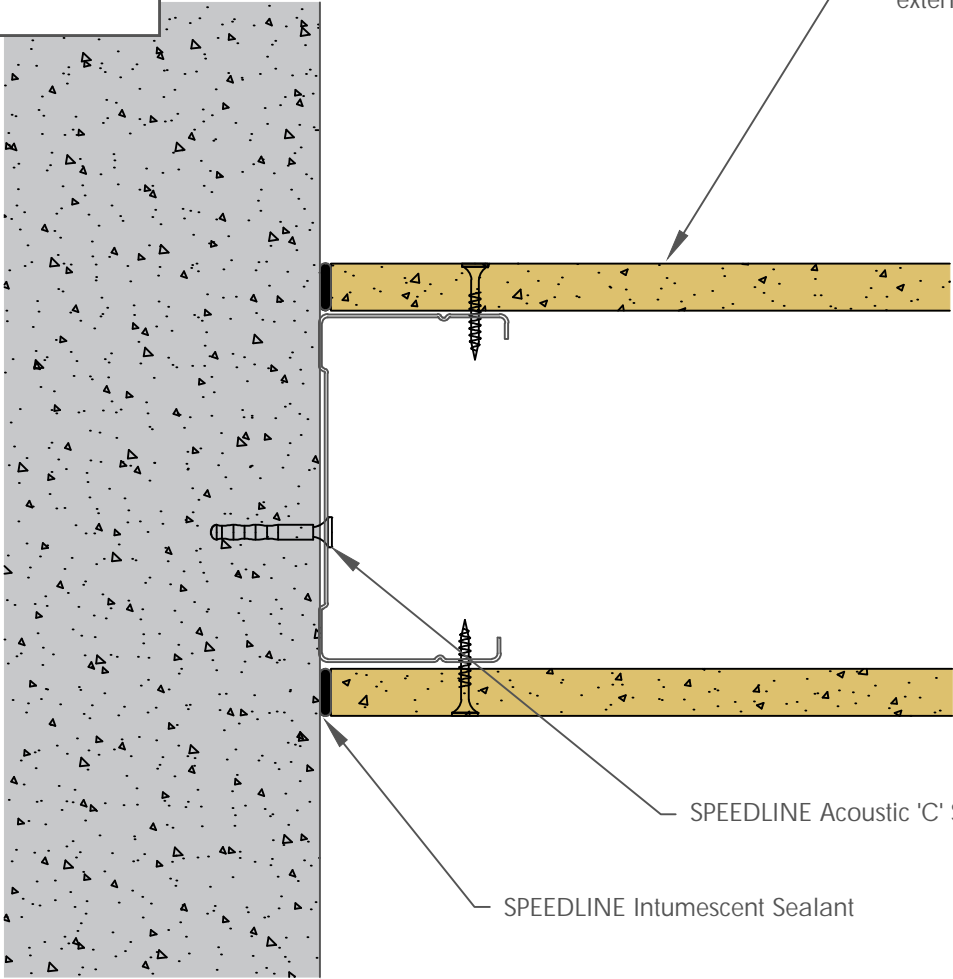
Design Data:
Detail may not replicate a laboratory tested configuration and for this reason approval from the relevant authority and Principal Designer should be sought.
Detail based on construction with materials & components as shown. The inclusion or substitution of any other manufacturers materials or components must be given in writing by SIG PLC.
This information is provided in good faith and is based upon details received which are assumed to include all relevant facts.
We accept no liability for its accuracy, adequacy or completeness. Recipients must satisfy themselves as to its suitability as we do not accept responsibility for any claims or consequential loss.
Acceptance of the content and subsequent design responsibility rests entirely with the recipients who should then produce accepted details on their own company documentation.

CDR No: 687	SCALE: NTS	DATE: 01/08/24
C STUD DEFLECTION HEAD DETAIL UP TO 60 MINUTES SINGLE LAYER AS9212IR		
Details to be read in conjunction with project specification guidelines		

Adsetts House,
16 Europa View,
Sheffield Business Park,
Sheffield,
S9 1XH.
T: 0114 231 8030
E: enquiries@speedlinedrywall.co.uk



Board Thickness	Speedline Drywall Fixing Length
12.5mm & 15mm	25mm
12.5mm + 12.5mm	25mm + 38mm
12.5mm + 15mm	25mm + 42mm
15mm + 15mm	25mm + 42mm



One layer of Gypsum Plasterboard fixed with SPEEDLINE Drywall Screws at 300mm Ctrs, (200mm at external angles). Refer to above table for fixing lengths

SPEEDLINE Acoustic 'C' Stud suitably fixed at 600mm Ctrs

SPEEDLINE Intumescent Sealant

Design Data:
Detail may not replicate a laboratory tested configuration and for this reason approval from the relevant authority and Principal Designer should be sought.
Detail based on construction with materials & components as shown. The inclusion or substitution of any other manufacturers materials or components must be given in writing by SIG PLC.
This information is provided in good faith and is based upon details received which are assumed to include all relevant facts.
We accept no liability for its accuracy, adequacy or completeness. Recipients must satisfy themselves as to its suitability as we do not accept responsibility for any claims or consequential loss.
Acceptance of the content and subsequent design responsibility rests entirely with the recipients who should then produce accepted details on their own company documentation.

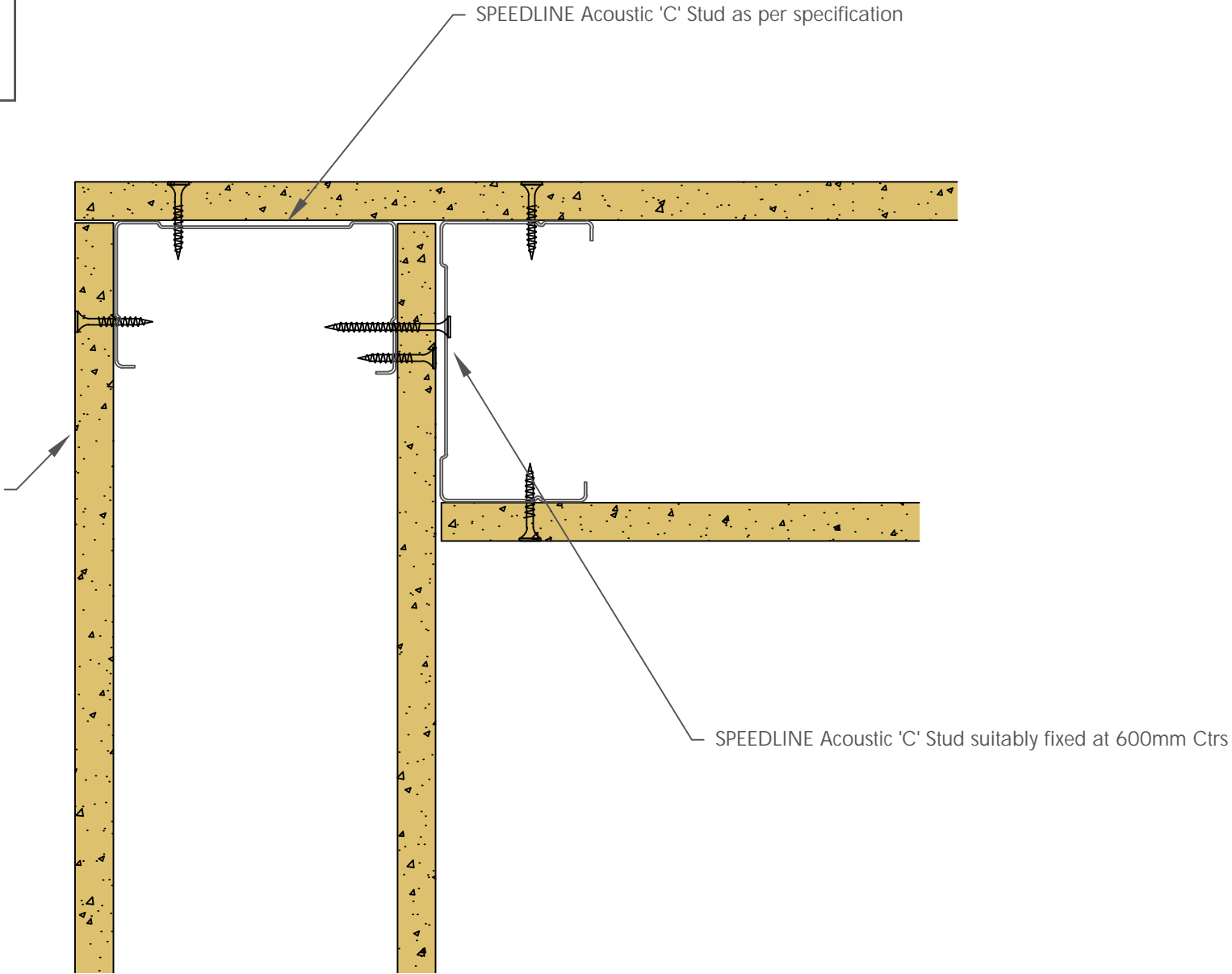
CDR No: 693	SCALE: NTS	DATE: 01/08/24
ACOUSTIC 'C' STUD WALL JUNCTION DETAIL SINGLE LAYER AS9212IR		
Details to be read in conjunction with project specification guidelines		

Adsetts House,
16 Europa View,
Sheffield Business Park,
Sheffield,
S9 1XH.
T: 0114 231 8030
E: enquiries@speedlinedrywall.co.uk

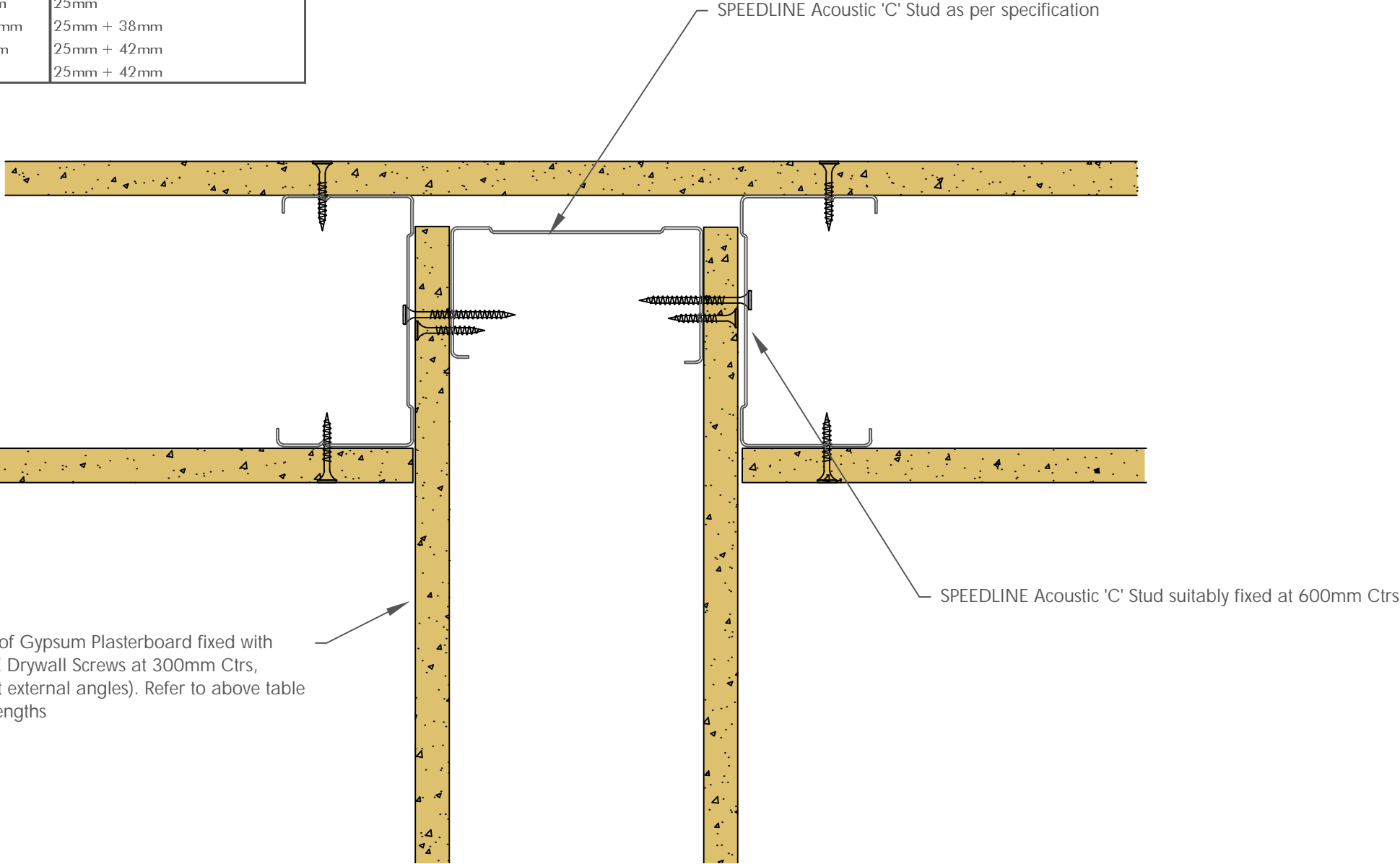


Board Thickness	Speedline Drywall Fixing Length
12.5mm & 15mm	25mm
12.5mm + 12.5mm	25mm + 38mm
12.5mm + 15mm	25mm + 42mm
15mm + 15mm	25mm + 42mm

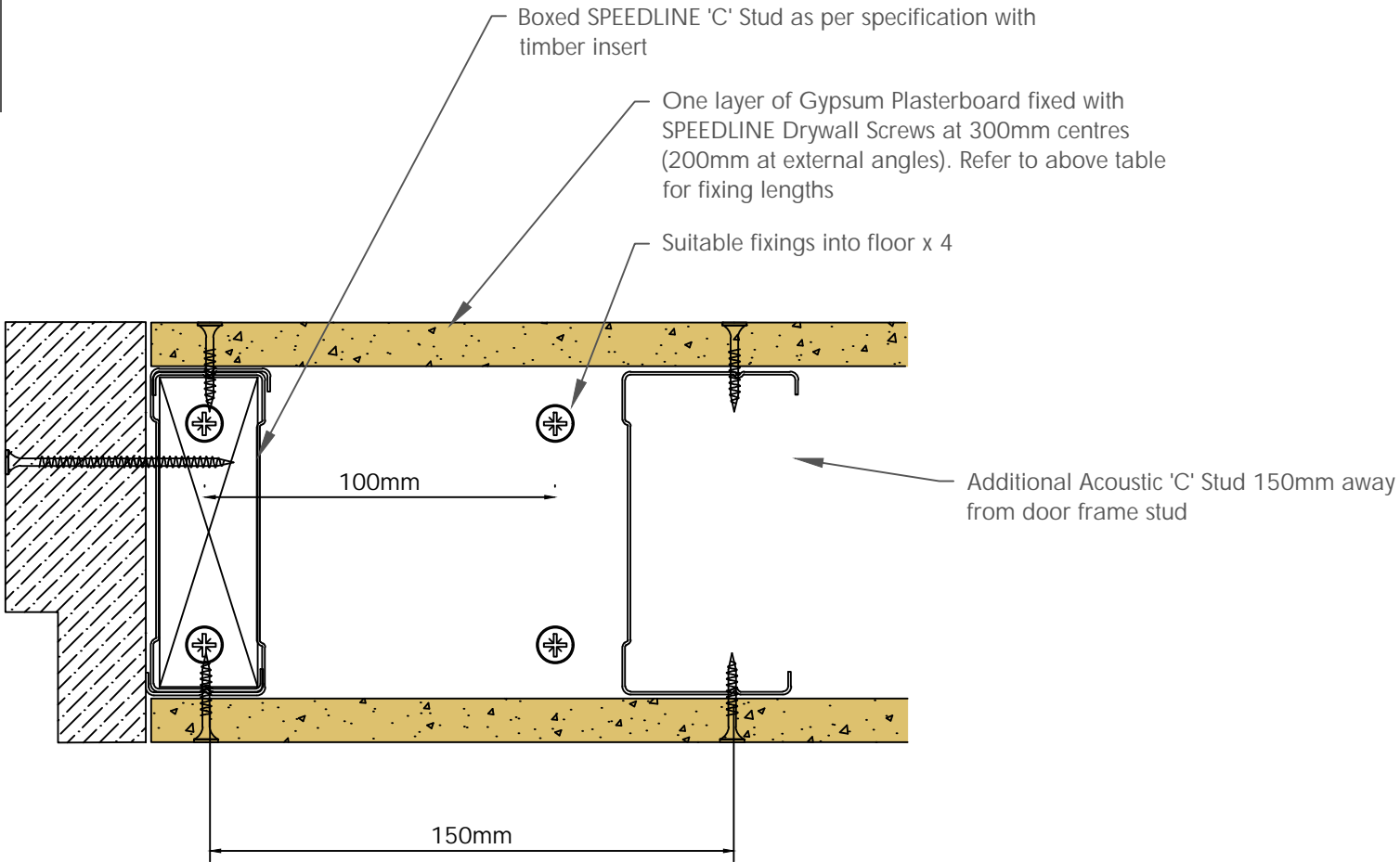
One layer of Gypsum Plasterboard fixed with SPEEDLINE Drywall Screws at 300mm Ctrs, (200mm at external angles). Refer to above table for fixing lengths





Board Thickness	Speedline Drywall Fixing Length
12.5mm & 15mm	25mm
12.5mm + 12.5mm	25mm + 38mm
12.5mm + 15mm	25mm + 42mm
15mm + 15mm	25mm + 42mm



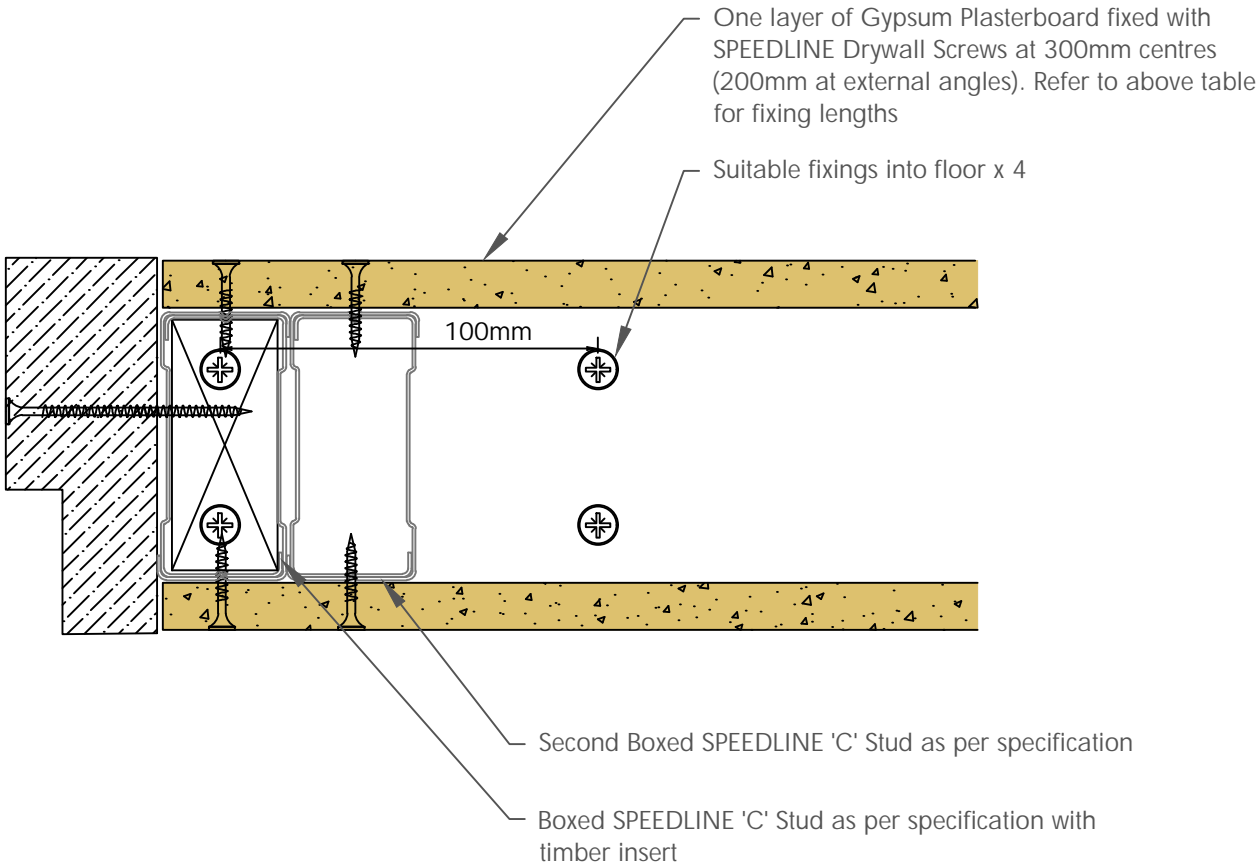
Board Thickness	Speedline Drywall Fixing Length
12.5mm & 15mm	25mm
12.5mm + 12.5mm	25mm + 38mm
12.5mm + 15mm	25mm + 42mm
15mm + 15mm	25mm + 42mm



To be read in conjunction with door manufacturers details & informantion

Design Data: Detail may not replicate a laboratory tested configuration and for this reason approval from the relevant authority and Principal Designer should be sought. Detail based on construction with materials & components as shown. The inclusion or substitution of any other manufacturers materials or components must be given in writing by SIG PLC. This information is provided in good faith and is based upon details received which are assumed to include all relevant facts. We accept no liability for its accuracy, adequacy or completeness. Recipients must satisfy themselves as to its suitability as we do not accept responsibility for any claims or consequential loss. Acceptance of the content and subsequent design responsibility rests entirely with the recipients who should then produce accepted details on their own company documentation.	CDR No: 689	SCALE: NTS	DATE: 01/08/24	Adsetts House, 16 Europa View, Sheffield Business Park, Sheffield, S9 1XH. T: 0114 231 8030 E: enquiries@speedlinedrywall.co.uk	 DRYWALL SYSTEMS Part of 
	ACOUSTIC 'C' STUD DOOR UP TO 60 Kgs SINGLE LAYER AS9212IR				
	Details to be read in conjunction with project specification guidelines				

Board Thickness	Speedline Drywall Fixing Length
12.5mm & 15mm	25mm
12.5mm + 12.5mm	25mm + 38mm
12.5mm + 15mm	25mm + 42mm
15mm + 15mm	25mm + 42mm



To be read in conjunction with door manufacturers details & informantion